



Spring Creek Corridor Trail Feasibility Study

Request for Proposals



May 20, 2025

Summary Information

Below are project information, due dates, and submittal instructions. Please direct all pre-submission questions regarding this project to Calvin Clark, Project Manager (cclark@magutah.gov). This RFP is being disseminated via the MAG Request for Bids, Proposals, and Qualifications web page, MAG's consultant list, and to select consultants who have done similar work for MAG in the past.

PROJECT

Project	Spring Creek Trail Corridor Feasibility Study
Source(s) of Funding	State, Local
Budget	\$150,000

PROJECT TEAM

MAG Project Manager (PM)	Calvin Clark Mountainland Association of Governments 586 East 800 North, Orem, UT 84097 cclark@magutah.gov
Project Sponsor	Mountainland Association of Governments (MAG)

DATES

Posting of the RFP	May 20, 2025
Questions Regarding the RFP Deadline	May 29, 2025, by 6 pm MDT
Clarifications to RFP Posted	June 3, 2025, by 6 pm MDT
Submission Deadline for RFP	June 17, 2025, by 6 pm MDT Responses submitted after this deadline will not be accepted.
Notice to Proceed	July 2025
Project Completion Date	March 2026

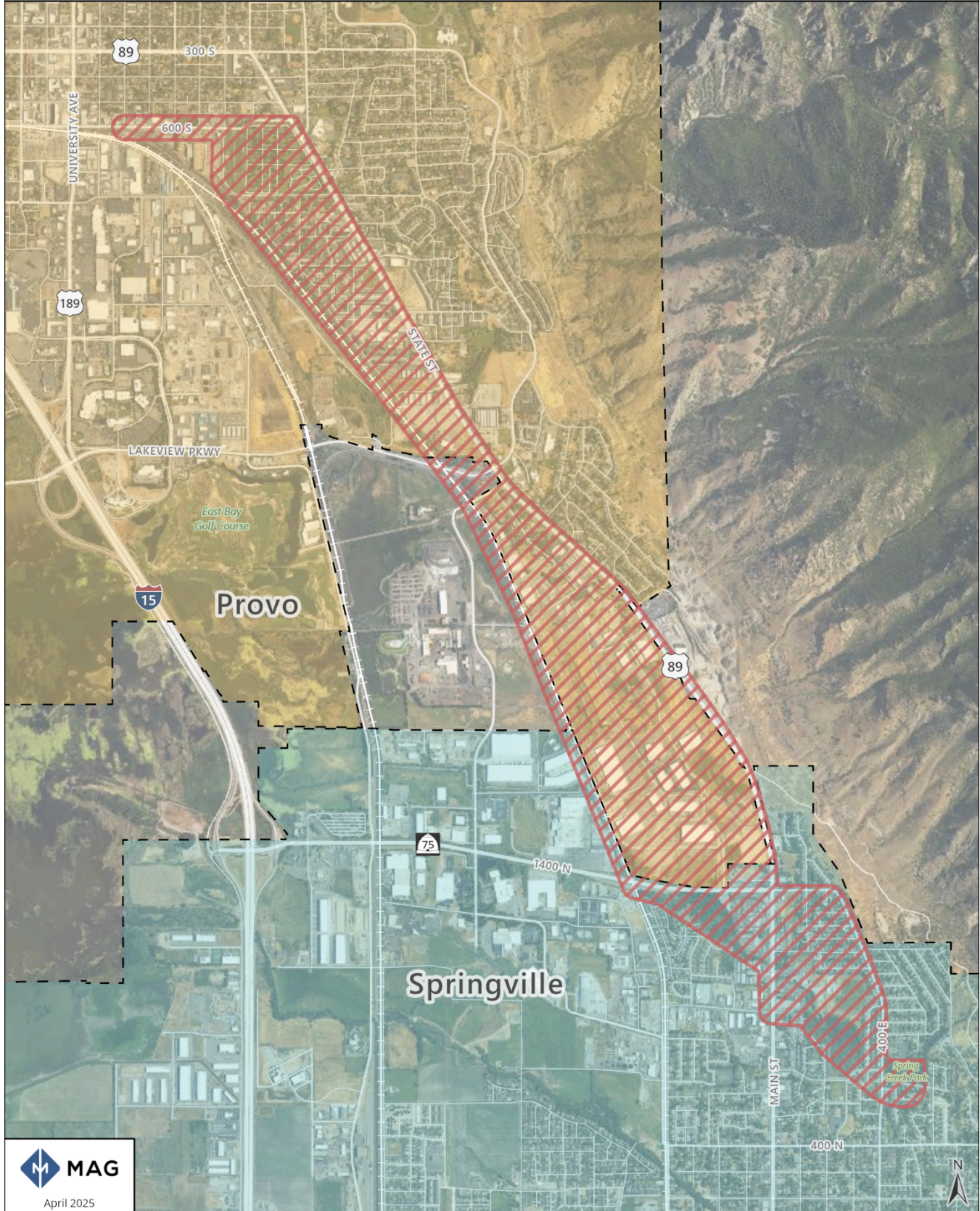
INSTRUCTIONS

Submittal Instructions	<p>Responses to this Request for Proposals must be contained in a single PDF document submitted by email to the <u>Project Manager, Calvin Clark</u> (cclark@magutah.gov), before the Submission Deadline. An acknowledgment of receipt will be sent.</p> <p>The RFP has a six-page limit, not including cover, cover letter, or resumes. Questions and other correspondence regarding this Request for Proposals must be emailed to the <u>Project Manager Calvin Clark</u> (cclark@magutah.gov) before the Questions Regarding the RFP deadline. Any clarifications or additional information will be shared online on MAG's Consultant Services web page: Request for Bids, Proposals, and Qualifications</p>
Budget and Timeline	<p>A proposed budget and timeline, outlined by task, is required for this RFP.</p>

A. Introduction

The Mountainland Association of Governments (MAG) Metropolitan Planning Organization (MPO) solicits proposals from qualified consultants to perform consulting services for the Spring Creek Trail Corridor Feasibility Study. This project will produce a comprehensive feasibility study for a trail connecting the Provo Frontrunner Station to roughly Spring Creek Park in Springville. The study will evaluate potential alternatives and provide recommendations for the final route and phasing options while considering the directness of the route, number and intensity of conflicts/crossings, connections to surrounding communities, right-of-way constraints, environmental concerns, and constructability concerns. The rough corridor to be studied is shown below:

Potential Spring Creek Trail Corridor



B. Background

Utah County has an extensive network of high-quality trails connecting a number of different communities. These trails provide safe and comfortable options for active transportation users to travel for both utilitarian and recreational purposes. However, there is not currently a high-quality trail that connects Springville and the southern part of the county with Provo and the rest of the county.

Substantial barriers inhibit the development of a high-quality active transportation corridor in this part of the region. There are geographic constraints of East Bay on the west and the mountains on the east. There are right-of-way constraints related to Union Pacific Railroad and the Department of Natural Resources. Finding a suitable corridor that navigates these difficulties would provide an alternative active transportation route for those traveling between Springville and Provo rather than using on-road or near-road facilities like US 89 (State Street).

C. Scope of Work

The Consultant will provide professional services to accomplish all specific work tasks, to be proposed by the Consultant, leading to a completed feasibility study for the corridor. A steering committee consisting of representatives from MAG, Provo, Springville and potentially representatives from other partners such as Utah County, UDOT, or UTA will provide input and guidance to the Consultant during the project. The project aims to determine the feasibility of the proposed route and identify the best alignment for a new trail from 600 South in Provo to roughly Spring Creek Park in Springville.

The specific work items shown below are the minimum required, and are intended to guide in preparing the proposal. Consultants are encouraged and expected to respond to this RFP with a proposal that includes additional tasks or subtasks, further defined task details, and a work plan and approach necessary to accomplish each task and do so in accordance with the project aim as stated above. The Consultant shall provide all required labor, equipment, tools, and facilities necessary to complete the required work, including but not limited to the following:

Alternative Identification

The Consultant shall identify multiple proposed alternative alignments for the route or portions of the route, with the input of the project steering committee and interested stakeholders. This shall include an initial feasibility determination based on insurmountable obstacles such as lack of right-of-way, major physical barriers, or legal issues. Alternatives should include or have planned connections to relevant existing trail segments, funded trail

segments in the [MAG MPO TIP](#), and planned trail segments in the [MAG MPO 2023 RTP](#), as well as existing transit connections.

Evaluation Process and Alternative Evaluation

The Consultant shall work with the project steering committee to develop the evaluation process and establish criteria with measurable evaluation metrics. The criteria should address issues such as risk mitigation, usability, safety, and others as identified by the consultant and/or steering committee. The Consultant shall apply the evaluation process to the identified alternatives to determine a preferred route or set of route segments.

Preferred Alternative

The Consultant shall use the evaluation of routes or route segments to establish a preferred alignment for the entirety of the Spring Creek Trail Corridor. The Consultant will do a deeper dive on this preferred alignment to better identify additional challenges and propose solutions to overcome these. If any fatal flaws are uncovered on this deep dive, the consultant will perform a similar deep dive on the next best alignment. Portions of the route that have a longer expected timeline for implementation should have interim alternate routes identified. A high-level cost estimate and phasing options will also be developed for the preferred alternative.

Documentation

The Consultant shall document all stages of the feasibility study through a written report supplemented with online story map intended for broad consumption, detailing the process and final recommended corridor alignment. The Consultant will allow members of the project steering committee to provide feedback on draft documentation before finalizing the product.

Final Scope of Work

The Final Scope of Work document shall be negotiated and executed prior to the start of work. Should the MAG MPO and Consultant be unable to reach a negotiated agreement, the contract may be negotiated and awarded to another acceptable proposal.

D. Qualifications

Respondents will have demonstrated experience in Active Transportation design, construction, and/or feasibility studies.

E. Proposal Requirements

Proposals should include the following information:

- Firm profile and experience with similar projects.
- Proposed approach and methodology.

- Team composition and qualifications and availability of key personnel.
- Project budget, timeline, and deliverables.
- References from past clients.
- No more than six pages, not including the cover page and resumes of key personnel.

F. Selection Process

A selection committee will evaluate proposals based on the following criteria:

- Past performance rating | 20%
- Strength of the firm and proposed team | 25%
- Understanding of the minimum scope of work | 30%
- Creativity and proposed value added to the scope | 15%
- References | 10%

The selection committee may elect to interview a short list of submitters.

G. Submission Instructions

- A. Proposal Requirements: Responses to this Request for Proposals (RFP) must adhere to the following:
 1. Be contained in a single PDF document.
 2. The RFP has a maximum six-page limit, not including cover, cover letter, or resumes.
 3. Be submitted by email to the Project Manager, Calvin Clark (cclark@magutah.gov), by the proposal due date.
- B. Communication with Staff: MAG MPO plans a question-and-answer process to solicit and document questions and provide answers openly.
 1. The MPO asks that firms do not contact MPO employees or selection committee members with questions regarding the RFP and draft work scope outside of this process.
 2. Questions and other correspondence regarding this Request for Proposals must be emailed to the Project Manager, Calvin Clark (cclark@magutah.gov).
 3. Answers, clarifications, or additional information will be shared online on MAG's Consultant Services web page: [Request for Bids, Proposals, and Qualifications](#).
 4. Questions and answers only will be provided, no identifying information will be posted.
- C. Proposals Submission: Proposals shall be submitted electronically to cclark@magutah.gov. Please include "Spring Creek Trail Corridor Feasibility Study" in the subject line.